

Index and Guide to...

Real Property Survey of Denver, Colorado

Works Progress Administration, 1940 - [Library Catalog record](#)

In the late 1930s several federal agencies, including the Works Progress Administration (WPA), collaborated with state and local authorities to produce numerous sheet maps and atlases. Among these projects was the real property survey of Denver, one of sixty-four cities across the country selected for this project according to the WPA's [Technique for a Real Property Survey](#) (1935). Created originally by the Federal Emergency Relief Administration (FERA), the project was transferred to the WPA in the mid-1930s. Denver's sheet maps in this atlas largely date to 1940.

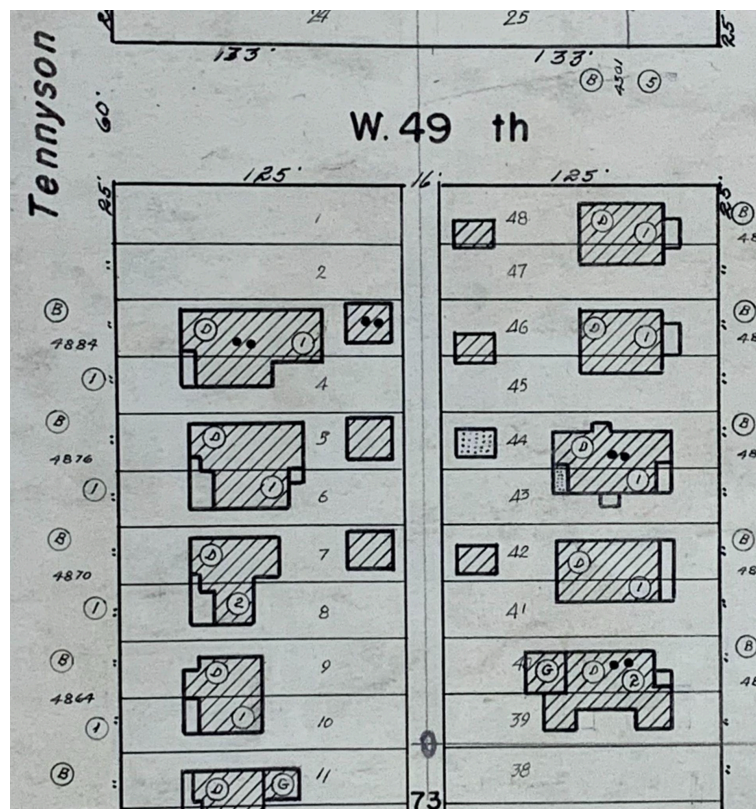
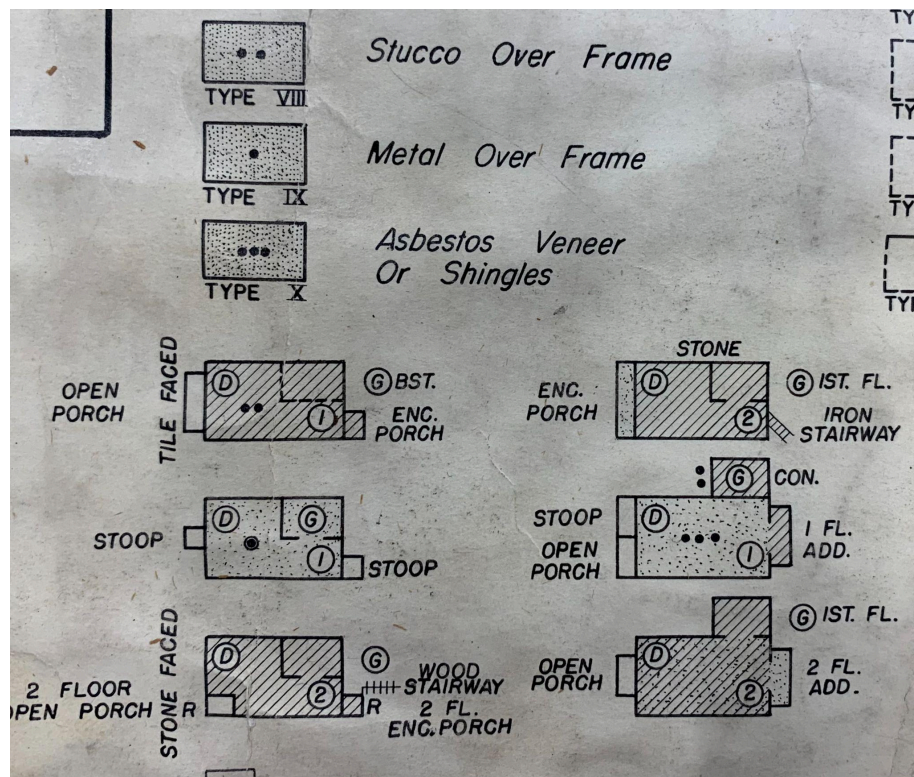
Volumes for Denver, with abbreviations used on index sheets. Sheet numbers on the index sheets reflect numbers associated with that volume only. When preceded by the abbreviation, the number reflects a sheet number in the indicated volume. The associated code book and index will help you interpret the codes and abbreviations on the maps, and to help locate places on the maps.

- **East Denver (ED)**
 - Bounded by the South Platte River to the northwest, Cherry Creek to the south, and Colorado Boulevard to the east. Downtown Denver is in this volume.
- **Highland Park (HP)**
 - Bounded by the South Platte River on the east, and constitutes most of Denver west of the river.
 - Index sheet 2 aligns to the east (right) of index sheet 1
 - Index sheet 4 aligns to the south of (under) index sheet 3
- **Montclair (M)**
 - Bounded by Colorado Boulevard on the west, and constitutes most of Denver east of that road. Covers the area due east of the East Denver volume.
- **South Denver (S)**
 - Bounded by the South Platte River to the west, Cherry Creek on the north, and Colorado Boulevard to the east.

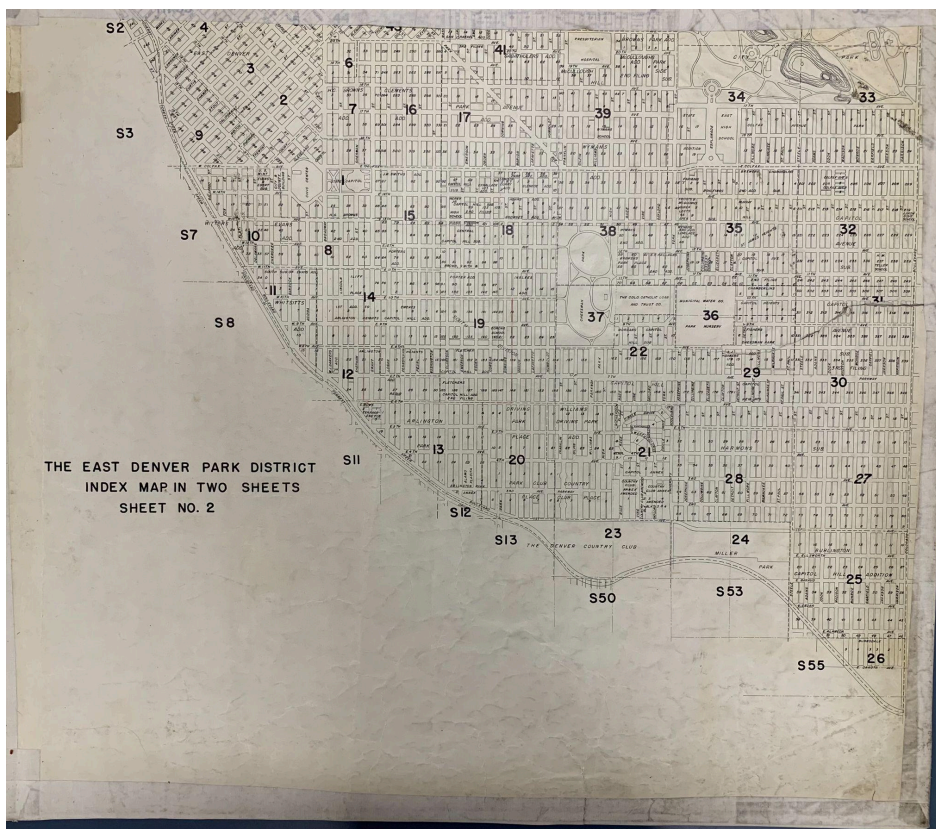
The purpose of the atlas was to create a detailed housing survey for each city, though the project captured detailed business information as well. Notable features of this four-volume atlas series include:

- Building footprints and construction material
- Type of business
- Exterior details

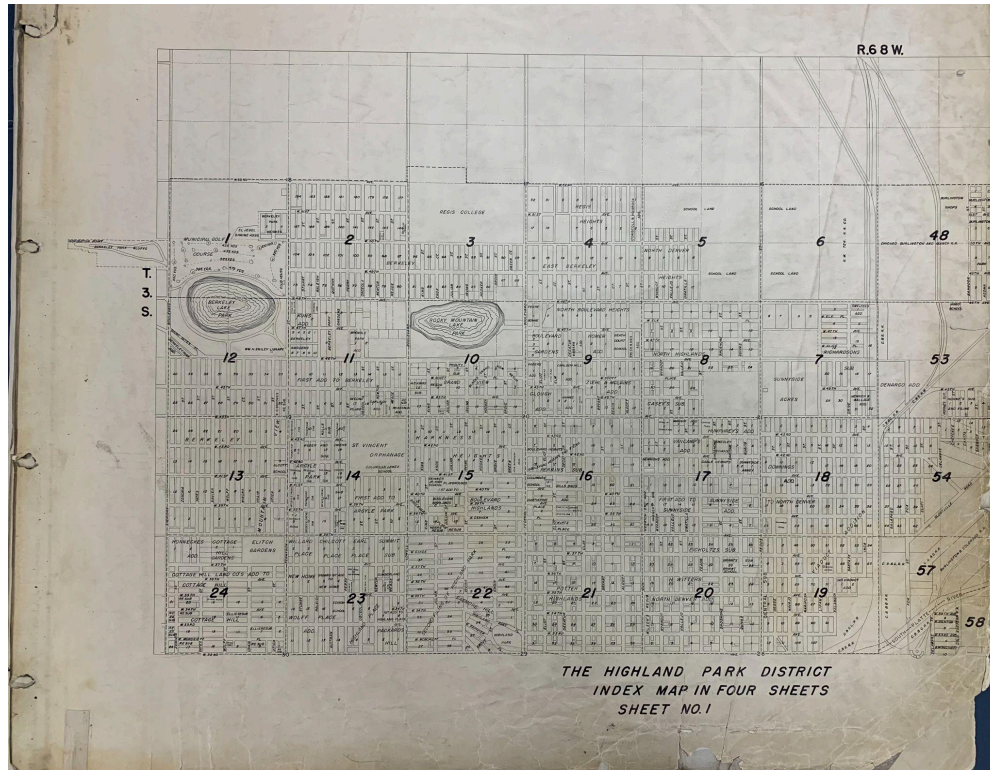
The following examples may help you determine if this map will give you the information you need. These are details from the legend and a sample from 49th and Tennyson.

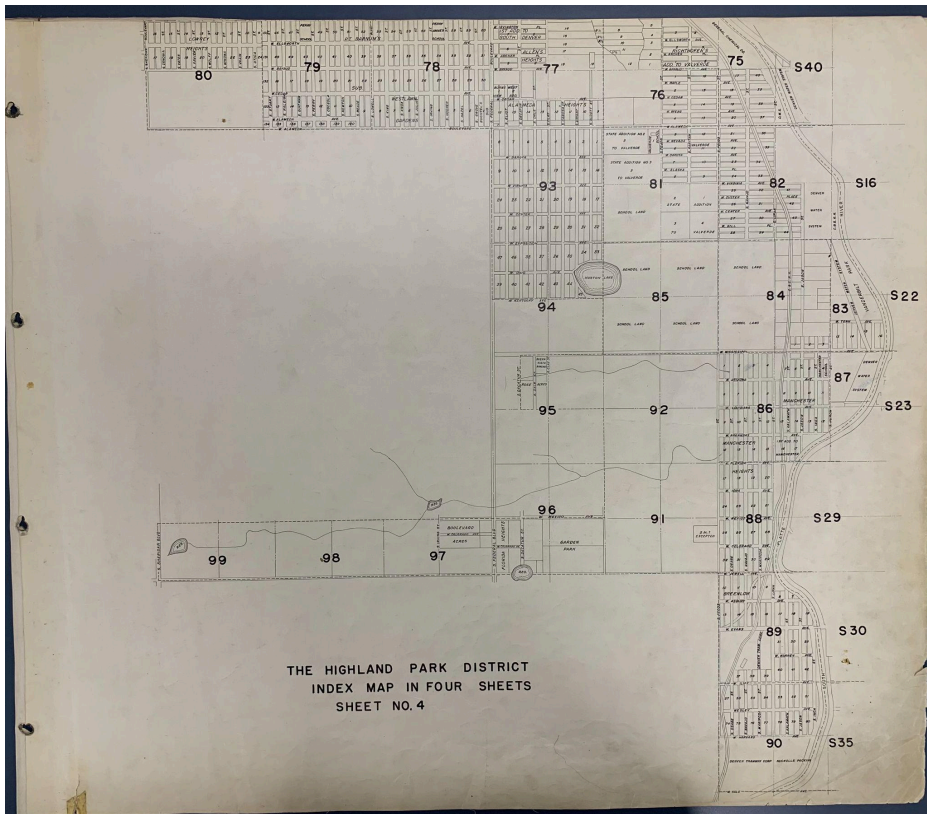


EAST DENVER

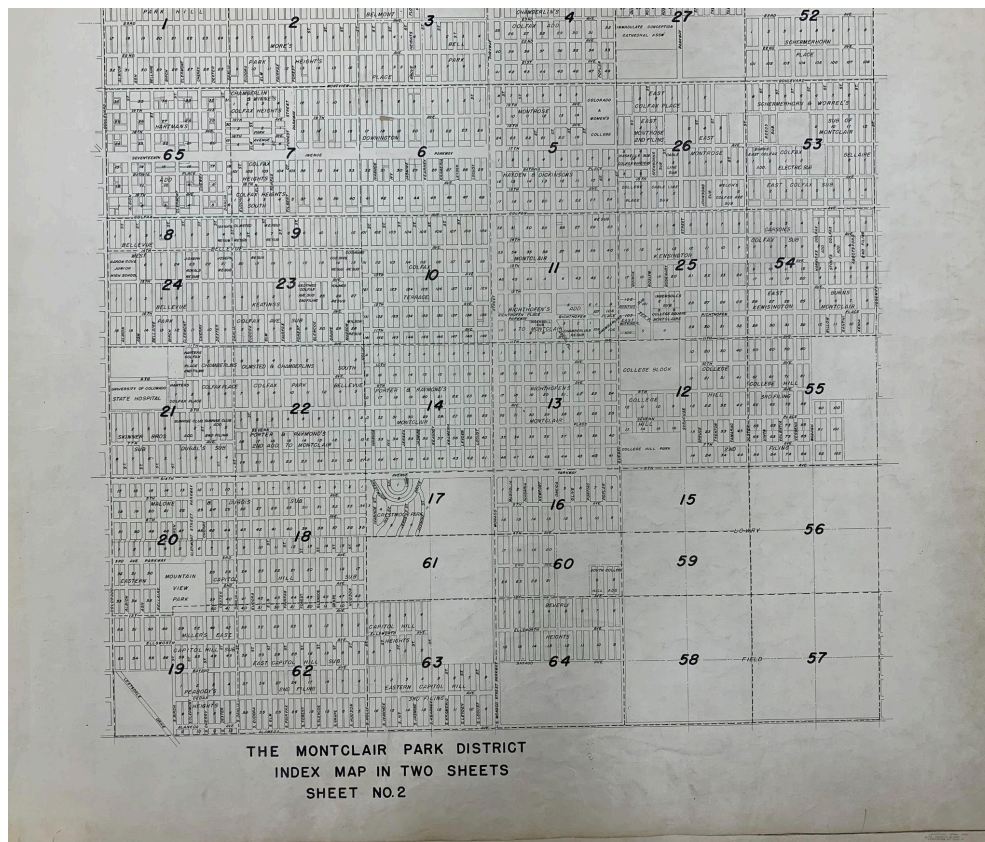
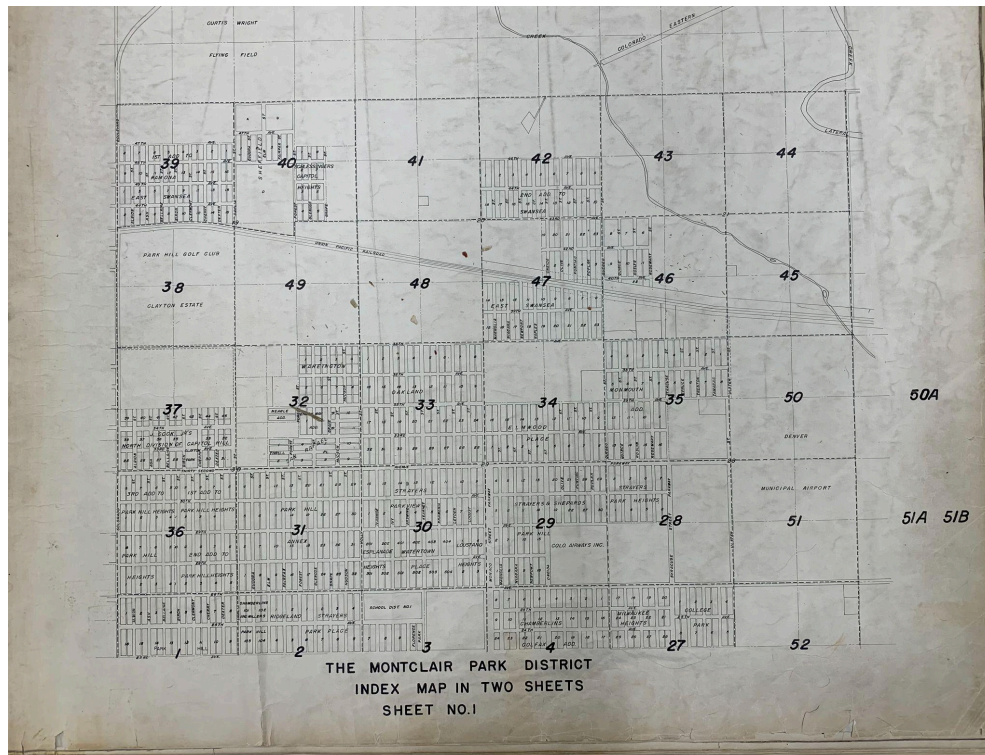


HIGHLAND PARK





MONTCLAIR



SOUTH DENVER

